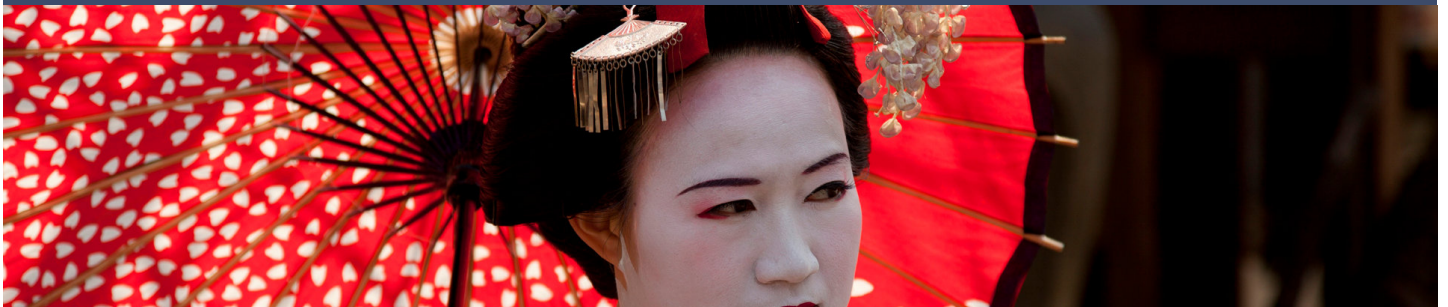


JAPAN'S TRADITION

10/05/2016 | 10 Days - 9 Nights | from Kanazawa to Osaka | L'AUSTRAL



DAY ITINERARY

- 1 Kanazawa (JP)
Embarkation 10/05/2016 from 16h00 to 17h00
Departure 10/05/2016 at 18h00
- 2 Sakaiminato (JP)
10/06/2016 from 08h30 to 19h00
- 3 Busan (ex Pusan) (KR)
10/07/2016 from 12h30 to 18h00
- 4 Hiroshima (JP)
10/08/2016 from 13h00 to 19h30
- 5 Tokushima (JP)
10/09/2016 from 12h00 to 18h00
- 6 Tokyo (JP)
10/10/2016
- 7 Tokyo (JP)
10/11/2016
- 8 Shimizu (JP)
10/12/2016 from 08h00 to 18h00
- 9 Shingu (JP)
10/13/2016 from 07h00 to 18h00
- 10 Osaka (JP)
Disembarkation 10/14/2016 at 07h00

YOUR CRUISE

On L'Austral, we invite you to discover the mysteries and the magnificence of Asia, pearls of the East, which evoke the beginning of an unforgettable journey.

From Kanawaza, you will discover the real Japan, at the same time so close and so distant... a real kaleidoscope of traditions, beliefs and lifestyles. From Kanazawa, to Hiroshima, including Pusan, your cruise will lead you to Osaka, the new centre of Japan, true open window on Japan's mysteries.



FOCUS ON... SHINGU

In the south-west of the Japanese archipelago, Shingu is a port town located in the Kansai region. Founded in 1933, it belongs to the peninsula of Kii, the country's largest. You will certainly marvel at the Kumano Sanzan religious complex, a Shinto sanctuary that enshrines three holy Kumano mountains. You can visit the two Shinto temples, Kumano Hongū Taisha and Kumano Hayatama Taisha. In the latter you'll witness the famous nagi sacred tree planted in 1159. These two sanctuaries, which attract many pilgrims, are listed UNESCO World Heritage sites.