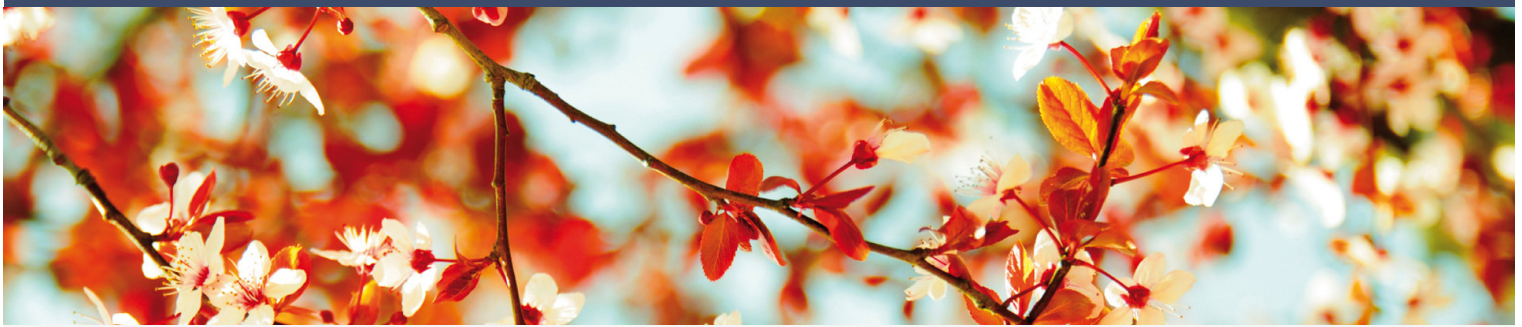


THE BEST OF JAPAN

04/09/2017 | 9 Days - 8 Nights | from Maizuru to Kobe | L'AUSTRAL



STOPOVER ITINERARY

- 1 Maizuru (JAPAN)
Embarkation 04/09/2017 from 16h00 to 17h00
Departure 04/09/2017 at 18h00
- 2 Sakaiminato (JAPAN)
04/10/2017 from 08h30 to 19h00
- 3 Busan (ex Pusan) (SOUTH KOREA)
04/11/2017 from 12h30 to 19h00
- 4 Nagasaki (JAPAN)
04/12/2017 from 08h00 to 19h00
- 5 Kagoshima (JAPAN)
04/13/2017 from 08h30 to 18h00
- 6 Uwajima (JAPAN)
04/14/2017 from 12h00 to 18h00
- 7 Hiroshima (JAPAN)
04/15/2017 from 06h00 to 19h00
- 8 Tamano, Okayama (JAPAN)
04/16/2017 from 06h00 to 22h00
- 9 Kobe (JAPAN)
Disembarkation 04/17/2017 at 07h00

YOUR CRUISE

We invite you to sail aboard L'Austral to the heart of the Japanese archipelago and discover the Land of the Rising Sun, which lives at the pace of its huge cities but is calmed by the serenity of its gardens.

Set sail for a cruise to the heart of the Japan, a blend of modernity and tradition.

From Maizuru to Kobe via romantic Kyoto, during your cruise Japan will open its doors to you and lift the veil on its imperial past, where the history of the Samurais rubs shoulders with the delicateness of Geishas.

When L'Austral calls there, do not miss the opportunity of making an exceptional visit to Pusan, South Korea's second city, a blend of modernity and sophistication. Warm and welcoming, this city of contrasts offers a spectacular view over the port as well as the old quarter of Chalgachi, which has maintained its very picturesque character.

Fall for the indisputable charm of Kagoshima, dominated by the majestic silhouette of the Sakurajima volcano, which has become the symbol of the city. Come and see its undiminished power during a walk along the Arimura.

You will be comfortable ensconced on the outer decks of L'Austral when you get your first glimpse of the skyline of Okayama, an ancient 16th seigniorial city. Do not miss the famous Korakuen Gardens, one of the three essential landscape gardens of Japan.

From Sakaiminato, discover medieval Japan and its former Samurai homes.

You will end your cruise with the discovery of the most Japanese of metropolis, Osaka, a modern, industrial and cultural city that is entirely turned towards the future. "Mokari makka?" - "How is business?". This is how the inhabitants greet each other in this city, which has been the national centre for trade and industry since the reign of Emperor Nintoku.



FOCUS ON... KANAZAWA

Located on the island of Honshu and bathed by the waters of the Sea of Japan, Kanazawa is a port marked by history. Under the predominance of the Meiji era, the city came under multiple political and

